

PRO-TEC Stone-Savers reduce bedding material loss

PRO-TEC Stone Saver bedding material containers are designed with aggregate conservation in mind. With the Stone Saver, you confine bedding material to the container, minimizing loss of material. You also reduce traffic congestion and safety problems associated with front-end loader dumping

from the edge of the trench. Bottom and ends are formed from one continuous 1/2-in. steel plate. Weld seams and sharp edges are eliminated. Dragging in either direction is easier because both front and back bottom edges are rounded.



steel plate. Weld seams and sharp edges are



Above Stone Saver shown with option extension.

Standard Stone Saver

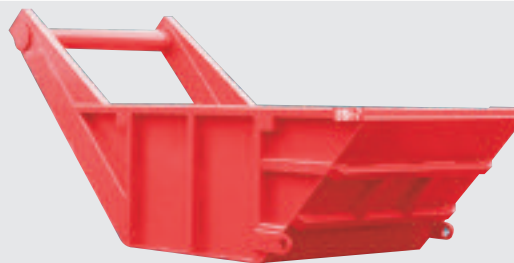
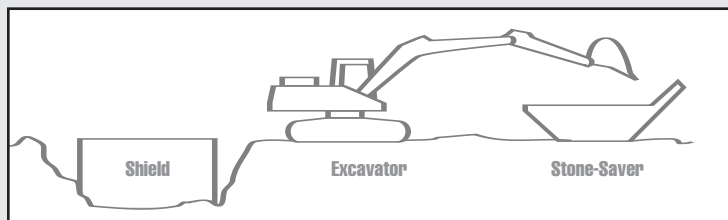
- Bottom and ends formed from one continuous 1/2" plate - eliminates edges
- 1/4" thick side plates
- Pulling eyes for towing
- 8" dia. x 1/2" thick pipe push/pull bar
- Heavy angle reinforcement at point of bucket contact
- Rectangular tube side stiffeners eliminate flanges
- Four lifting pockets for loading and unloading

Stone Savers – Standard

Model	Height (in.)	Inside Width (in.)	Inside Length (in.)	Weight (lbs.)
SS - 3	36	48	103	3100
SS - 5	36	63	116	4100
SS - 7	48	63	143	5000
SS - 9	48	63	164	5400
SS - 12	48	75	183	6400
SS - 15	48	75	222	7200

Heavy Duty Stone Saver

- Ideal for large excavators and severe conditions. Same features as standard saver with the following additions:
- Heavy duty gusseting on push/pull arm
- 3/8" thick side plates
- Full length inside wear bars for durability
- Ends reinforced with tube stiffeners



Stone Savers – Heavy Duty

Model	Height (in.)	Inside Width (in.)	Inside Length (in.)	Weight (lbs.)
SSH - 5	36	63	116	4830
SSH - 7	48	63	143	6160
SSH - 9	48	63	164	6670
SSH - 12*	48	75	183	7840
SSH - 15*	48	75	222	8740
SSH - 18*	60	81	219	9640
SSH - 20*	60	81	239	10440

*Heavy duty Stone Savers of 12 cubic yards or larger include an 8" dia. x .718" thick push/pull bar



P.O. Box 130 • 1298 Lipsey Dr. • Charlotte, MI 48813 • Phone: (517) 541-0303 or 1-800-292-1225
 Fax: (517) 541-0329 • www.pro-tecequipment.com